

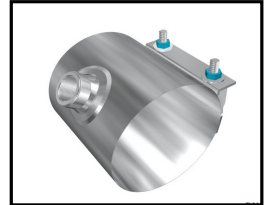


CANADA PIPELINE ACCESSORIES (1986) CORP.

Style SC-2 All-Stainless Steel Saddle Clamps

Canada Pipeline's saddle clamps with their one piece construction, make installation quick and easy. The extra wide stainless shell assures equal pressure around the circumference of the pipe. This extra wide support is particularly important when tapping PVC or Polyethylene pipe.

A key feature of our saddle design is the encapsulation of the sealing gasket to ensure optimum performance.



SS Tapping Saddle - Material Specifications

- Bolts** 18-8 stainless steel, 5/8" roll NC thread in sizes 4" and larger.
- Bolt & receiver Bars** 304 stainless steel. TIG welded to shell to form a strong fusion, and fully passivated.
- Shell** 304 stainless steel.
- Locking washer Plate** 304 stainless steel. Locks into position for easy tightening of nuts.
- Nuts** 18-8 stainless steel & fluorokote coated.
- Washer** Nylon and stainless steel washers used to reduce wear on washer plate.
- Gasket** SBR Rubber - ASTM D 2000 AA4 15 rubber is specially formulated for water service.

STYLE SC-2 DOUBLE BOLT SADDLE CLAMP

1-1/4", 1-1/2" & 2" FMI & CC				
NOMINAL SIZE IN INCHES	O.D. RANGE INCHES	CATALOG NUMBERS	WIDTH IN INCHES	WEIGHT EACH LB.
*3"	3.40-3.65	SC2-0365-TAP	5"	3
4"	4.45-4.85	SC2-0485-TAP	7-1/2"	3
4"	4.95-5.35	SC2-0535-TAP	7-1/2"	3
6"	6.54-7.00	SC2-0700-TAP	7-1/2"	5
6"	6.99-7.45	SC2-0745-TAP	7-1/2"	5
8"	8.63-9.08	SC2-0908-TAP	7-1/2"	6
8"	9.21-9.67	SC2-0967-TAP	7-1/2"	6
10"	10.70-11.16	SC2-1116-TAP	7-1/2"	6
10"	11.75-12.21	SC2-1221-TAP	7-1/2"	6
12"	12.74-13.21	SC2-1321-TAP	7-1/2"	7

* 3" available only 1-1/4, 1-1/2 FMI & 1-1/4 CC

All stainless material fully passivated
Torque bolts to 60 FT.LBS