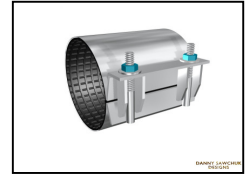




Stainless Steel Repair Clamps



Repair clamp - Material Specifications

Bolts	18-8 stainless steel, 5/8" roll NC thread.
Bolt & receiver Bars	304 stainless steel. TIG welded to shell to form a strong fusion, and fully passivated.
Shell	304 stainless steel.
Locking washer Plate	304 stainless steel. Locks into position for easy tightening of nuts.
Nuts	18-8 stainless steel & fluorokote coated.
Washer	Nylon and stainless steel washers used to reduce wear on washer plate.
Gasket	SBR Rubber - ASTM D 2000 AA4 15 rubber is specially formulated for water service.
Armour	304 stainless steel, heavy guage, molded into gasket to prevent "hanging up" during installation.

Model CR-1

		Length and approximate shipping weight lbs.			
Pipe Diameter	O.D. Range	8" Long	12" Long	16" Long	24" Long
3	3.45 - 3.70	5	7	9	n/a
4	4.45 - 4.80	5	8	10	n/a
6	6.50 - 6.90	6	9	11	19
8	8.50 - 8.90	7	11	14	23
10	10.65 - 11.05	11	15	18	27
12	12.65 - 13.05	14	19	28	37

(other ranges available)

Model CR-2

		Length and approximate shipping weight lbs.			
Pipe Diameter	O.D. Range	8" Long	12" Long	16" Long	24" Long
4	4.70 - 5.57	13	18	26	39
6	6.80 - 7.60	15	23	29	46
8	8.95 - 9.75	17	25	31	48
10	11.00 - 11.80	n/a	27	33	50
12	12.65 - 13.45	n/a	29	36	52
14	15.05 - 15.85	n/a	34	42	59
16	17.15 - 17.95	n/a	n/a	44	65

(other ranges available)

** To order specify model number and length of clamp as well as OD of pipe.*

All stainless material fully passivated

Torque bolts to 65 FT.LBS

BRITISH COLUMBIA: 27576-51A Avenue • Langley, B.C. • V4W 4A9

Phone: (604) 856-7250 Toll Free 1-800-993-2599 • Fax: (604) 856-7260 Toll Free 1-888-302-7199